

STRING ARRANGEMENTS

ALL HAIL THE POWER OF JESUS' NAME

#STR217 String Quartet with Piano . (Grade 3+) Hymn Tune: "DIADEM"
69 measures. Time approx. 2:02. Key:G Meter: 3/4
Violin 1 G3 - G6 Violin 2 G3 - D6
Viola D3 - G5 Cello C2 - G4

AMAZING GRACE

#VCD384 Cello Duet with Piano. (Grade 3+) 80 measures.
Time 4:05 Key: G-D. Meter: 3/4 & 4/4. Piano Part is Grade 3+
Cello1 A2 - A4 Cello 2 D2 - F#4

AMAZING GRACE GREATER THAN OUR SIN

#VCP189 Cello Solo with Piano. (Grade 2+) 81 measures. Time 3:03
Key: G - D - A. Meter: 3/4 - 4/4 - 12/8. Cello G2 - D4

AMERICA, THE BEAUTIFUL

#STR080 String Quartet (Gr. 3) 62 measures. Key: A-B. Meter: 4/4 3:17
Violin 1 E4 - E6 Violin 2 C#4 - G#5
Viola E3 - C#5 Cello D2 - E4

ANGELS WE HAVE HEARD ON HIGH

#STR067 String Quartet (2 Violins, Viola & Cello) (Grade 4) 29 measures
Key: F-G-Ab-A. Meter: 12/8-9/8-15/8. Performance Time approx. 2:00
Violin 1 A4 - A6 Violin 2 F4 - D6
Viola E3 - E5 Cello A2 - A4

AWAY IN A MANGER

#STR066 String Quartet (2 Violins, Viola & Cello). (Gr. 3+) 82 measures.
Includes both popular "Away in a Manger" tunes.
Key: F - G. Meter: 3/4. Performance Time approx. 2:15
Violin 1 G3 - F6 Violin 2 G3 - D6
Viola C3 - D5 Cello C2 - Bb4

AWAY IN A MANGER

#VCP556 Violin & Cello with Piano Accompaniment (Grade 3+)
Key: C - D. Meter: 3/4. 82 Measures. Time 2:50
Violin G3 - C6 Cello G2 - G4

BENEATH THE WONDROUS CROSS

#FVP316 Flute/Violin Duet with Piano . Combines "Beneath the Cross of
Jesus" & "When I Survey the Wondrous Cross". (Grade 3+) 61 measures
Key: G - A. Performance Time approx. 2:54. Meter: 4/4
Flute C#4 - F#6 Violin A3 - C#6

Be Still My Soul with Joyful, We Adore Thee

#SIP007 Solo Instrument w/Piano. (Gr 2 solo - Gr 3+ Piano)
82 measures. Key of G (concert). Meter: 4/4 - 2/4. Time approx 2:40.
Solo Parts: C/Eb/F/Bb/C High Treble; Bass & Tuba; Alto Clef

Be Still My Soul with Joyful, We Adore Thee

#FCP158 Flute & Clarinet Duet with Piano and optional Viola & Cello.
84 measures. (Grade 2). Piano part is Grade 3+
Key: G (concert). Meter: 4/4 - 2/4. Performance Time approx. 3:00
Flute G4 - D6 Clarinet A3 - G5 (written) Viola G3 - D5 Cello G2 - D4

Be Still My Soul with Joyful, We Adore Thee

#VCP442 Violin & Cello Duet with Piano. 84 measures. (Grade 2+)
Key: G. Meter: 4/4-2/4. Performance Time approx. 3:11. Piano part is Gr 3+
Violin G3 - F5 Cello G2 - D4

BE THOU MY VISION

#CSP008 Cello Solo with Piano. 50 measures (Gr 2) Key: C or D Meter: 3/4
Cello D2 - E4 (key of D major) *You get 2 different versions!*
Cello C2 - D4 (key of C major) *One in C major and 1 in D major*
Piano part is Grade 2+ (originally written for 2 students)

BE THOU MY VISION

#VDP138 Cello Duet with Piano. 135 measures. (Grade 3+)
Key: B - C - D Meter: 3/4 - 4/4 - 6/8. Performance Time approx 3:56
Cello 1 A2 - A4 Cello 2 D2 - E4

BE THOU MY VISION

#VSP121 Violin Solo with Piano. (Grade 3+) 127 measures.
Key of E - F - G. Meter: 4/4 - 3/4 - 6/8. Time: 3:47 Violin Range G3 - F6

BE THOU MY VISION

#VSP170 Viola Solo with Piano. 57 measures (Grade 2). Time 2:20
Viola C3 - D5 Key of C. Meter 3/4. Piano part is Grade 2+

BE THOU MY VISION

#FVD315 Flute & Violin Duet with Piano. 140 measures. (Grade 3+)
Key: A - Bb - C Meter: 3/4 - 4/4 - 6/8. Perf. Time approx 4:09
Flute Eb4 - G6 Violin G3 - C6

BE THOU MY VISION

#VCD444 Violin & Cello Duet with Piano. 50 measures. (Grade 2)
Key: D Meter: 3/4. Performance Time approx 2:00
Violin A3 - F#5 Cello A2 - D4

BE THOU MY VISION

#VCD514 Cello Duet with Piano. 59 measures. (Grade 2+)
Key: C Meter: 3/4. Performance Time approx 2:30
Cello 1 G2 - D4 Cello 2 C2 - C4

BE THOU MY VISION

#VCD515 Cello Duet (unaccompanied) 64 measures. (Grade 3-)
Key: C Meter: 3/4. Performance Time approx 2:35
Cello 1 G2 - D4 Cello 2 C2 - C4

BIRTHDAY OF A KING

#STR064 String Quartet (2 Violins, Viola & Cello) (Grade 4-) 45 Measures
Key of G - C Meter: 4/4 - 2/4. Performance Time approx. 2:20
Violin 1 A3 - G6 Violin 2 A3 - B5
Viola E3 - D5 Cello C2 - F4

BIRTHDAY OF A KING

#VNR373 Violin Quartet . (Grade 4-) 54 Measures.
Key of G - C Meter: 4/4 - 2/4. Performance Time approx. 2:20
Violin 1 C4 - A6 Violin 2 G3 - B5
Violin 3 G3 - F#5 Violin 4 (or Viola) G3 - F5

BIRTHDAY OF A KING

#STT570 2 Violins & Cello with Piano Accomp. (Grade 3+) 52 Measures
Key of G - C Meter: 4/4 (2/4). Performance Time approx. 2:50
Violin 1 G3 - B5 Violin 2 A3 - G5 Cello C2 - F4

BLESSED ASSURANCE

#VND095 Violin Duet (Grade 4+) 75 measures. Key: A-B-C
Meter: 6/8 - 9/8 - 4/4 . Performance Time approx. 3:35
Violin 1 B3 - F6 Violin 2 A3 - B5

BLESSED ASSURANCE

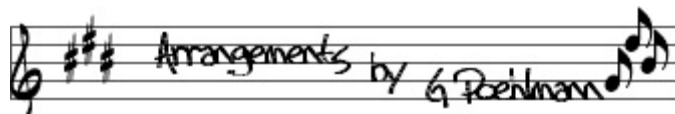
#VCD104 Cello Duet with *Optional* Piano Accompaniment. (Grade 4)
77 measures. Key: F - G - A. Meter: 6/8 - 9/8 - 4/4
Cello 1 G#2 - D5 Cello 2 F2 - B4

BLESSED ASSURANCE

#VCD108 unaccomp. Cello Duet (Gr. 4+) 76 Measures. Key: A. Time: 3:50
Blends "Blessed Assurance" with "Jesu, Joy of Man's Desiring". Meter: 9/8 - 4/4
Cello 1 G#2 - A4 Cello 2 E2 - G4

BLESSED ASSURANCE

#STR297 String Quartet with *Optional* Piano Accompaniment. (Grade 4-)
44 measures. Key: D - E. Meter: 12/8 - 6/8. Time approx 2:55
Violin 1 E4 - F#6 Violin 2 E4 - D6
Viola A3 - B5 (Violin 3 sub. included) Cello E2 - G#4



STRING ARRANGEMENTS

BLESSED ASSURANCE

#FVD319 Flute & Violin (unaccompanied) (Grade 4) 75 measures.
Key: A-B-D . Meter: 6/8 – 9/8 – 4/4 . Time approx. 3:30
Flute C#4 - G6 Violin A3 – E6

BLESSED ASSURANCE

#VND368 Violin Duet (Grade 3) 78 measures. Key: A
Meter: 6/8 – 9/8 – 4/4 – 12/8. Performance Time approx. 3:35
Violin 1 A3 - D6 Violin 2 G#3 - B5

BLESSED ASSURANCE with WHISPERING HOPE

#VFP458 3 Violins & Flute (or Pennywhistle) with Piano (Grade 3+)
105 measures. Key: D. Meter: 6/8 – 3/4 - 9/8 Performance Time 4:10
Flute (or Pennywhistle) D4 - B5 Violin 1 C#4 - A5
Violin 2 C#4 – A5 Violin 3 G3 - D5 (or Viola)

CHRISTMAS CELEBRATION

O Come, All Ye Faithful; The First Noel; Angels We Have Heard on High
#ENS569 2 Violins, Viola, Flute, Clarinet, Alto Sax, Trumpet, Trombone, &
Drum Set. (Grade 3+) 2 full versions included. One has softer ending.
Key: G (concert). Meter: 3/4 - 4/4. 91 measures. Time 3:10
Violin 1 G3 - D6 Violin 2 G3 - B5. Viola E3 - D5. Flute C4 - G6
Clarinet A3 - A5 (written). Trumpet D4 - A5 (written) Trombone G2 - G4

CHRISTMAS MEDLEY

Bring a Torch, Jeanette, Isabella; Jesu, Joy of Man's Desiring; Angels We Have Heard on High
#ENS488 2 Violins, Viola, Clarinet, Bass Clarinet, & Horn (Gr 3+)
Key: G (concert). Meter: 6/8 - 4/4 - 9/8. 118 measures. Time 3:00
Violin 1 G3 - E6 Violin 2 G3 - G5 Viola G3 - E5 (or Violin 3)
Clarinet G#3 - A5 (written) Bass Clarinet E3 - E5 (written) or Bassoon/Cello
Horn A3 - F#5 (written)

CHRIST THE LORD IS RISEN TODAY

#STR362 String Quartet (unaccompanied) . (Grade 4-) 77 measures.
Key: C – D - E. Meter: 6/8. Performance Time approx. 2:50
Violin 1 C4 – G#6 Violin 2 G3 – B5
Viola C3 – D#5 (Violin 3 sub. included) Cello C2 – F#4

THE CHURCH IN THE WILDWOOD

#VCP335 Cello Solo with Piano. 119 measures. (Grade 3)
Meter: 4/4 & 3/4. Key: F - G – F# minor. Time approx 4:30
Cello D2 – A4

COME, THOU FOUNT OF EVERY BLESSING

#DUO041 Unaccompanied Duet. 43 measures (Gr. 2+) Key: C/D Meter: 3/4
Solo Parts: C/Eb/F/Bb/C; High Treble, Bass Clef, Tuba & Alto Clef

THE DAY YOU GAVE US, LORD IS ENDED

#VSP415 Violin Solo with Piano Accomp (Grade 4-). 107 measures
Key: B/G/D/A. Meter: 3/4, 6/8, 4/4. Time 4:10
Violin G3 - D6 **Program Notes Included!*

DOWN AT THE CROSS

#STR417 String Quartet (unaccompanied). 85 measures (Grade 4-)
Key: G - A. Meter: 4/4 - 6/8. Performance Time approx. 3:40
Violin 1 A3 – E6 Violin 1 G3 – C#6
Viola E3 – D5 Cello D2 – F#4

FAIREST LORD JESUS/WHAT A FRIEND WE HAVE IN JESUS

#STR363 String Quartet (unaccompanied). 54 Measures (Grade 3+)
Key: D - E - F Meter: 4/4. Performance Time approx. 2:50
Violin 1 C#4 – E6 Violin 2 A3 – C6 (Violin 3 sub. for Viola included)
Viola E3 – F#5 Cello C2 – F4

FAITH OF OUR FATHERS

#CSO145 Cello solo with Organ (Grade 3+) 123 measures
Key of E - B – C. Meter: 3/4 – 4/4. Performance Time approx. 4:15
Cello Solo C2 - A#4 (opt.C#5)

Note: C4=middle C. Gradings are highly subjective! Grade 1 = Very Easy • Grade 3 = Medium Difficult • Grade 5 = Very Difficult

THE FIRST NOEL

#STR370 String Quartet with optional Percussion. 81 measures. (Gr. 3+)
Key D/E. Meter: 4/4. Performance Time approx. 2:30
Violin 1 D4 – D6 Violin 2 A3 – G#5
Viola D3 – E5 Cello C#2 – E4
Optional percussion parts included: Timpani, Marimba, Percussion 1 (Bass Drum, Sus. Cymbal), Percussion 2 (Claves, Triangle, Cowbell, Shaker)

FUGUE #2 IN C MINOR

#STR366 String Quartet. 31 measures. (Gr. 3+) Meter: 4/4. Key: C minor
Violin 1 F4 – D6 Violin 2 Bb3 – Ab5
Viola C3 – A4 (Violin 3 sub. included) Cello C2 – D4

GESU BAMBINO

#SST520 Vocal Solo with String Quartet. 51 measures (Grade 3+)
Key: E - G Meter: 12/8 Performance Time approx. 4:00
Soprano Vocal B3– G5. Violin 1 D4 - E6. Violin 2 G#3 - B5
Viola E3 - E5 Cello D2 - E4.
You will get 4 different keys! C & D for lower voices. E & G for higher voices.

GOD WILL TAKE CARE OF YOU

#STR329 String Quartet - unaccompanied. (Grade 4)
65 measures. Key: A - G. Meter: 6/8. Performance Time 2:20
Violin 1 G3 – G6 Violin 2 G3 – B5
Viola D#3 – E5 (Violin 3 sub. included) Cello C2 – E4

HARK! THE HERALD ANGELS SING

#STR528 String Quartet (unaccompanied). 78 measures (Grade 3+)
Key: G - D Meter: 4/4 - 3/4 - (2/4) Performance Time approx. 3:30
Violin 1 D4 - D6 Violin 2 D4 - B5
Viola D3 - F#5 Cello D2 - D4

HE LEADETH ME

#SOP047 Solo Instrument with Piano (Grade 2). 54 measures
C/Eb/F/Bb/High C Treble Solo; Bass Clef Solo; Alto Clef Solo

HE LEADETH ME

#VCP511 Cello Duet with Piano (Grade 2) 58 measures.
Key: C - D. Meter: 4/4. Performance Time approx. 3:15
Cello 1 C3 - D4 Cello 2 D2 - D4

HOLY, HOLY, HOLY

#STR077 for String Quartet. (Grade 3+) 68 measures.
Key: D – A Meter: 4/4 – 3/4 Performance Time approx. 2:21
Violin 1 F#4 - F#6 Violin 2 G3 - B5
Viola G3 - F#5 (Violin 3 sub. included) Cello D2 - F#4

HOLY, HOLY, HOLY

#ENS421 Flute, Viola (or Clarinet), Trombone & Cello (Unaccompanied) Grade 3.
68 measures Key: D-A Meter: 3/4 – 4/4 Time approx. 3:00
Flute F#4 – G6 Viola G3 – F#5 or Clarinet A3 – G#5 (written)
Trombone A2 – F#4 Cello D2 – A4

HOW GREAT THOU ART

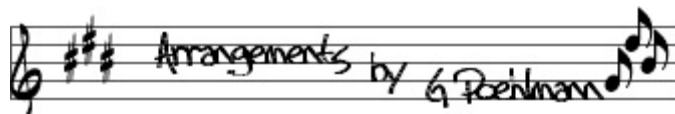
#VCD518 Cello Duet with Piano accompaniment. (Grade 3-) 68 measures.
Key: G - F. Meter: 4/4 (5/4). Time: approx. 4:40
'Cello 1 A2 - D4 'Cello 2 C2 - D4 (piano part is grade 3+)

I HEARD THE BELLS ON CHRISTMAS DAY

#STR529 String Quartet. Medium in difficulty (Grade 3+). 59 measures
Key: F - G - A. Meter: 4/4 - 3/4. Performance Time approx. 2:25
Violin 1 A3 - B5 Violin 2 A3 - G5
Viola A3 - C#5 Cello C2 - E4

IN THE CROSS OF CHRIST I GLORY

#STR215 for String Quartet. (Grade 3) 76 measures.
Key: F/G/A. Meter: 3/4 & 4/4. Performance Time: approx. 2:40
Violin 1 A3 - D6 Violin 2 G3 - A5
Viola C3 - E5 Cello C2 - D4



STRING ARRANGEMENTS

IN THE GARDEN

#VSP341 Viola Solo with Piano (Grade 3+ and 4) 66 measures.
Key: A – G. Meter: 4/4 – 6/8 Time approx 2:55
Viola C#3 – C6 (Grade 4) or Viola C#3 – F#5 (Grade 3+)

I STAND AMAZED

#STR147 for String Quartet (Grade 4) 84 measures.
Key: A – D – G. Meter: 4/4 – 3/4 – 12/8. Performance Time approx. 3:06
Violin 1 G3 - B5 Violin 2 G3 - G5
Viola D3 - D5 (Violin 3 sub. included) Cello G2 - D4

I STAND AMAZED

#ENS420 Flute, Viola (or Clarinet), Trombone & Cello (Unaccomp.) Gr 3+
84 measures Key: A–E–G. Meter: 3/4–4/4–12/8 . Perf Time approx. 3:15
Flute G4 – G6 Viola G3 – G5 or Clarinet A3 – A5 (written)
Trombone A2 – F#4 Cello C2 – G4

IT CAME UPON THE MIDNIGHT CLEAR

#STR365 String Quartet (unaccompanied) 79 measures (Grade 4-)
Key: D - A. Meter: 6/8. Performance Time approx 2:50
Violin 1 C#4 – F#6 Violin 2 A3 – B5
Viola C#3 – A5 (Violin 3 sub. included) Cello C#2 – A4

IT IS WELL WITH MY SOUL

#SIP024 Solo Instrument with Piano. 57 measures (Grade 2)
C/Eb/F/Bb/ C High Treble Solo; Bass Clef & Tuba Solo; Alto Clef

IT IS WELL WITH MY SOUL

#VLP159 Violin Solo with Piano. 118 measures. (Grade 4-)
Meter: 4/4 & 3/4. Key: G - A - E - F. Time approx. 5:20
Violin F4 - F#6

IT IS WELL WITH MY SOUL

#VSP275 Viola Solo with Piano. 120 measures. (Grade 4-)
Meter: 4/4 & 3/4. Key: D – E – B - C. Time approx. 5:25
Viola C3 – Db6

IT IS WELL WITH MY SOUL

#VCD168 Viola & Cello Duet with Piano. 57 measures (Grade 2)
Performance Time: 3:10. Key of C - D. Meter: 4/4 (one measure of 6/4)
Viola D3 - B4 Cello C3 - C4 (opt. D4)

IT IS WELL WITH MY SOUL

#CSP320 Cello Solo with Piano. 122 measures. (Grade 4)
Meter: 4/4 & 3/4. Key: D – E – B - C. Time approx. 5:30
Cello C2 – C#5

IT IS WELL WITH MY SOUL

#STR326 String Quartet (with optional Piano) 87 measures. (Grade 3+)
Key of D – A – Bb. Meter: 4/4 – 3/4. Performance Time approx 3:30.
Violin 1 A3 – D6 Violin 2 A3 – A5
Viola D3 – E5 (Violin 3 sub. included) Cello D2 – G4

IT IS WELL WITH MY SOUL

#VLP456 Violin Solo with Piano accompaniment. 118 measures. (Gr 3+)
Key: G - D. Meter: 4/4 - 3/4. Time 5:25 Violin G3 – E6

IT IS WELL WITH MY SOUL

#VCD516 Cello Duet with Piano accompaniment. 65 measures. (Gr 2+)
Key: C - D. Meter: 4/4. Performance Time 3:30
Cello 1 C3 - D4 Cello 2 G2 - C4

JESUS AND THE CHILDREN (medley)

#VSP122 Violin Solo with Piano. 81 measures. (Gr 3+) Key: F–G–A–B–C
Meter: 12/8 – 3/4 – 4/4. Time: 2:37 Medley includes: *Jesus Loves the Little Children, Jesus Loves Me, & Praise Him, Praise Him, All Ye Little Children*
Violin B3 – E6

JESUS IS ALL THE WORLD TO ME

#STR593 unaccompanied String Quartet. 83 measures. (Grade 3-)
Key G - A. Meter: 3/4. Performance Time approx 2:20
Violin 1 A3 - B5 Violin 2 A3 – A5
Viola E3 - E5 Cello F2 - D4

JESUS PAID IT ALL

#STR290 unaccompanied String Quartet. 86 measures. (Grade 4-)
Key D-G-C. Meter: 3/4 – 4/4 Performance Time approx 3:05
Violin 1 C4 – F6 Violin 2 A3 – C6
Viola D3 – Eb5 (Violin 3 sub. included) Cello D2 – Bb4

JINGLE BELLS

#STE425 String Ensemble with Piano (mixed instruments and abilities)
44 measures. Key: D. Meter: 4/4 Time: 1:35 (no repeat) or 3:10 (repeat)
Violin 1, Viola 1, Cello 1, Bass 1 (grade 2+)
Violin 2, Viola 2, Cello 2, (grade 2)
Violin 3, Viola 3, Cello 3 (grade 1 – open strings & first finger E & B only)
Bass 2 (grade 1 – open strings only)

JOLLY OLD ST. NICHOLAS

#STR199 for String Quartet (Grade 3+) 81 measures.
Key : D- A. Meter: 4/4 – 3/4. Performance time approx. 2:45
Violin 1 C#4 - C#6 Violin 2 G3 - D5
Viola D3 - A4 Cello C#2 - C#4

JOYOUS CHRISTMAS MEDLEY

Hark! The Herald Angels Sing; Away in a Manger; O Come, All Ye Faithful; Silent Night; God Rest Ye Merry, Gentlemen.

#STR535 String Quartet with optional Piano. 113 measures (Grade 4)
Key: G - C - F (d minor). Meter: 4/4 & 3/4. Performance Time 4:15
Violin 1 D4 - E6 Violin 2 B3 - G5
Viola D3 - D5 'Cello F2 - E4

JOYOUS CHRISTMAS MEDLEY

Hark! The Herald Angels Sing; Away in a Manger; O Come, All Ye Faithful; Silent Night; God Rest Ye Merry, Gentlemen.

#ENS550 Flute, Clarinet, 2 Violins & Viola. 117 measures (Grade 4)
Key: G - C - F (d minor). Meter: 4/4 & 3/4. Performance Time 4:25
Flute D4 - F#6 Clarinet E3 - B5 (written)
Violin 1 A3 - E6 Violin 2 B3 - G5 Viola C3 - D5

JOY TO THE WORLD

#VLT273 Violin Trio with Optional Piano (Grade 2) 70 measures.
Key of D. Meter: 4/4 – 3/4 Time approx. 2:30
Full Score + parts for Violin 1, Violin 2, Violin 3, Viola (Violin 3) & Piano
Violin 1 D4 – F#5 Violin 2 C#4 – D5 Violin 3 A3 – D5

KOL NIDREI

#TVP364 Trumpet & Cello with Piano Accomp. 82 measures (Grade 4-)
Key: E minor. Meter: 4/4 (3/4 & 5/4). Performance Time approx. 5:00
C Trumpet B3 – B5 or Bb Trumpet C#4 – C#6 Cello D2 – C5

KOMM, SÜSSER TOD (Come, Sweet Death) (J.S. Bach BWV478)

#VAP322 Viola Solo with Organ Accompaniment (Grade 4-)
Performance Time approx 3:55. 94 measures.
Key: C minor – A minor. Meter: 3/4 Time 3:55 Viola C3 – Eb6

LEAD ME TO CALVARY

#STR573 String Quartet (unaccompanied). 50 measures (Grade 3+)
Key: D - E. Meter: 4/4. Performance Time approx. 2:40
Violin 1 D4 – B5 Violin 2 A3 – G5
Viola D3 – D5 Cello D2 – E4

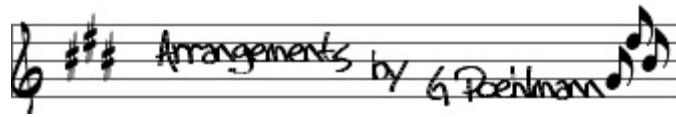
MERRY CHRISTMAS MEDLEY

Up On The House-Top; Jolly Old St. Nicholas; Mary's Boy Child; Jingle Bells; and We Wish You a Merry Christmas

#STR339 String Quartet - unaccompanied (Grade 3+) 87 measures
Key: G - D. Meter: 4/4 & 3/4. Time: 2:50.
Violin 1 E4 – D6 Violin 2 D4 – G5
Viola D3 – D5 (or Violin 3) Cello D2 – E4

A MIGHTY FORTRESS

#CSP028 Cello Solo with Piano. 64 measures (Grade 2)
Key: C Meter: 4/4 – 2/4 Cello range: G2 – C4



STRING ARRANGEMENTS

A MIGHTY FORTRESS

#CDP029 Cello Duet with Piano. (Grade 2). 64 measures Key: C.
Meter: 4/4 – 2/4 Cello 1 C3 – C4 Cello 2 C2 – C4

MY COUNTRY 'TIS OF THEE

#STR079 String Quartet. Medium Difficult (Grade 4-) 53 measures
Key: D – G – E. Meter: 3/4. Performance Time approx. 2:08
Violin 1 C#4 – D6 Violin 2 D3 – B5
Viola C#3 – G#5 Cello D3 – F#4

MY FAITH HAS FOUND/COME, THOU FOUNT

#VCD114 Cello Duet (unaccompanied). (Grade 3+) 97 measures.
Key: G – A – D – E Meter: 4/4 – 3/4. Performance Time approx 3:05
Cello 1 C#3 – E4 Cello 2 G2 – D4

MY FAITH HAS FOUND/COME, THOU FOUNT

#VLD149 Violin Duet (unaccompanied) (Grade 3+) 100 measures.
Key : D – E – G – A. Meter:4/4 – 3/4. Performance Time approx. 3:05
Violin 1 D4 – B5 Violin 2 G3 – A5

MY FAITH HAS FOUND/COME, THOU FOUNT

#VCT355 Cello Trio (unaccompanied). (Grade 3+) 97 measures.
Key: G – A – D – E Meter: 4/4 – 3/4. Performance Time approx 3:05
Cello 1 C#3 – A4 Cello 2 A2 – D4 Cello 3 E2 – D4

MY FAITH HAS FOUND/COME, THOU FOUNT

#STR532 String Quartet (unaccompanied). (Grade 3+) 100 measures.
Key: D – E – G – A. Meter: 4/4 – 3/4. Performance Time approx 3:45
Violin 1 G3 – A5 Violin 2 G3 – E5
Viola E3 – B4 Cello E2 – E4

NEAR THE CROSS

#STR140 String Quartet (Gr 3-) 52 measures. Key: G–A Meter: 6/4 3:00
Violin 1 C4 – A5 Violin 2 D4 – A5
Viola D3 – A4 (Violin 3 sub. for Viola) Cello D2 – D4

O COME, ALL YE FAITHFUL

#STR531 String Quartet (unaccompanied). 79 measures. (Grade 3-)
Key D – E. Meter: 4/4. Performance Time approx.: 3:30
Violin 1 A3 – B5 Violin 2 B3 – A5
Viola E3 – D5 Cello F#2 – A3

O COME, O COME, EMMANUEL

#SIP062 Solo Instrument with Piano. 68 measures (Grade 2+)
Key: G (e minor). Meter: 3/4 – 4/4. Performance Time approx. 3:20
C/Eb/F/Bb/ C High Treble Solo; Bass Clef & Tuba Solo; Alto Clef

O COME, O COME, EMMANUEL

with COME, THOU LONG EXPECTED JESUS.
#FHC491 Flute, Horn & Cello w/Piano & optional Percussion. 85 Measures
Time 3:10 Meter 3/4 & 4/4 Key of F (d minor) Grade 3
Flute D4 – F6 Horn A3 – E5 (written)
Perc. 1 (SD, BD, Sus. Cym, Triangle, Mark Tree) Perc. 2 – Timpani

O HOLY NIGHT

#STR197 String Quartet (unaccompanied). (Grade 4)
72 Measures. Performance Time: 4:45. Key of E – G. Meter: 12/8
Violin1 B3 – B6 Violin 2 G3 – E6
Viola F#3 – C6 Cello C#2 – B4

O HOLY NIGHT

#VSS340 Vocal Solo with String Quartet. (Grade 4)
72 Measures. Time: 4:50. Key of A-C. Meter: 12/8
Vocal Range: Male A2 – G4 -or- Female A3 – G5
Violin1 G3 – A6 Violin 2 G3 – B5
Viola C#3 – G5 Cello C2 – A4
Additional version included for Lower Voices (Alto/Baritone/Bass). Key A – G

O HOLY NIGHT

#FST385 Flute Solo with String Quartet. (Grade 4) 72 Measures.
Time: 4:50. Key: A-C. Meter: 12/8 Flute Solo C4 – C7
Violin1 G3 – F6 Violin 2 G3 – B5
Viola C#3 – G5 Cello C2 – A4

O, HOW I LOVE JESUS

#VSP119 Violin Solo with Piano. 71 Measures. (Grade 4)
Key: E – F# – G. Meter: 6/8. Performance Time approx. 2:47
Violin: G#3 – F#6

O, HOW I LOVE JESUS with AMAZING GRACE

#STR423 String Quartet with optional Piano accomp. 102 Measures.
Key: G – D. Meter: 3/4. Performance Time approx. 2:58
Violin1 E4 – A5 (Grade 3-) Violin 2 A3 – D5 (Grade 2)
Viola/Violin 3 G3 – E5 (Grade 3) Cello D2 – E4 (Grade 3)

THE OLD RUGGED CROSS

#CSP221 Cello Solo w/Piano. Medium Difficult (Grade 4-)
65 measures. Key: G – D – A. Time 4:20. Meter: 6/8, 9/8, 4/4
Cello Range C#2 – A4

THE OLD RUGGED CROSS

#VCP492 Violin & Cello w/Piano. Medium Difficult (Grade 4-)
65 measures. Key: G – D – A. Time 4:25. Meter: 6/8, 9/8, 4/4
Violin G3 – F#6 Cello C#2 – A4

ONWARD CHRISTIAN SOLDIERS

#STQ328 String Quintet. 59 measures. (Grade 3+) *Swing Style!*
Meter: 3/4 Key: D Performance Time approx 1:30
Violin 1 A3 – E6 Violin 2 A3 – E5
Viola D3 – B4 Cello A2 – F#4 Bass E2 – D4 (written)

O PERFECT LOVE

#SIP074 for Solo Instrument with Piano. (Grade 3)
66 measures. Key: G. Meter: 4/4 – 2/4.
SOLOS: C/C High/Bb/Eb/F Treble; Alto Clef; Bass Clef; Tuba

O SACRED HEAD, NOW WOUNDED

#VAP186 Viola Solo with Piano. 64 Measures. (Grade 3+)
Viola Range: E3 – A5 Key of C/a min. Meter: 4/4 Time: 3:22

O SACRED HEAD, NOW WOUNDED

#VSP348 Violin Solo with Piano. 65 Measures. (Grade 4-)
Violin Range: G3 – F#6 Key: C – D (Am – Bm). Meter: 4/4 Time: 3:25

O SACRED HEAD, NOW WOUNDED

#VCP382 Cello Solo with Piano. 64 Measures. (Grade 3+)
Cello Range: E2 – A4 Key: C (Am). Meter: 4/4 Time: 3:25

PRaise HIM! PRAISE HIM!

#VCD129 Violin & Cello with Piano. (Grade 3) 92 measures.
Key: G – A. Meter: 6/8 – 4/4. Performance Time approx. 2:30
Violin D4 – C#6 Cello A2 – E

PRaise TO THE LORD, THE ALMIGHTY

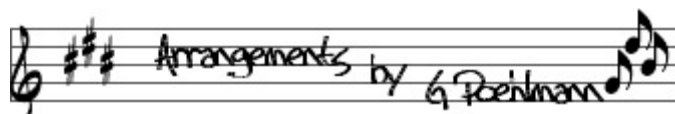
#STR613 String Quartet (Grade 3-) 106 measures.
Key: F – G. Meter: 3/4. Performance Time approx. 3:04
Violin 1 G4 – B5 Violin 2 G3 – G5 Viola C3 – D5 Cello G2 – D4

REDEEMED

#VCP229 Cello Solo with Piano Accompaniment (Grade 4+) 99 measures
Key: F- G. Meter: 6/8 – 5/8. Performance Time approx. 3:30
'Cello C2 – B4

SERVICE SALUTE medley of Armed Forces Themes

#STR615 String Quartet (unaccompanied). 153 Measures. (Grade 4-)
Key: D (concert). Meter: 2/2 – 6/8 – 3/2. Performance Time approx. 3:40
Violin 1 D4 – E6 Violin 2 A3 – A5 Viola F#3 – E5 Cello E2 – G4



STRING ARRANGEMENTS

SING WE NOW OF CHRISTMAS

#STR534 String Quartet (unaccompanied) (Grade 4-) Time approx. 2:40
103 measures. Key: G–A (Em - F#m). Meter: 4/4 - 3/4 - 2/2
Violin 1 A3 – D6 Violin 2 B3 – F#5
Viola E3 – D5 Cello E2 – D#4

SOUNDS OF CHRISTMAS (Medley)

#STR357 String Quartet (unaccompanied) (Grade 4) Time approx. 6:50
It Came Upon the Midnight Clear; Good Christian Men, Rejoice; Silent Night; The First Noel
164 measures. Key: Bb–F–C–A–G. Meter: 6/8–12/8–4/4–2/4–7/4– 6/4– 3/8
Violin 1 A3 – E6 Violin 2 G3 – A5
Viola C3 – D5 (Violin 3 sub. included) Cello C2 – A4

TAKE MY LIFE AND LET IT BE

#VCP163 Cello Solo with Piano. Medium in Difficulty (Gr 4) 70 measures
Key: G-A. Meter: 4/4 – 6/8. Performance Time approx. 3:00
Cello D2 - A4

TAKE MY LIFE AND LET IT BE

#VAP174 Viola Solo with Piano. Medium in Difficulty (Grade 4)
71 measures. Key G-A. Meter: 4/4, 6/8. Time: 3:02. Viola D3 - A5

THANKSGIVING MEDLEY

#STR240 String Quartet (unaccompanied) Medium Difficult (Grade 4 -)
96 measures. Key G-E-Bb-C. Meter: 4/4, 3/4, 2/4. Time: 3:40
Violin 1 D4 - Eb6 Violin 2 G3 - G5
Viola C3 - Bb4 (Violin 3 sub. included) Cello C2 - D4

THAT SILENT CHRISTMAS NIGHT

Thou Didst Leave Thy Throne, O Little Town of Bethlehem, Away in a Manger, & Silent Night.
#VCP539 Cello Solo with Piano. Medium in difficulty (Grade 3+)
87 measures. Key: D - G. Meter: 4/4 - 3/4 - 2/4 Time 3:50
Cello F#2 - F#4

THERE'S A SONG IN THE AIR

#STR406 String Quartet (unaccompanied). Medium Difficult (Gr 4-)
89 measures. Key G - A. Meter: 3/4 – 6/8 . Time: 3:10
Violin 1 D4 – F#6 Violin 2 A3 – A5
Viola D3 – B5 Cello D2 – F#4

THIS IS MY FATHER'S WORLD

#VCD383 Cello Duet with Piano Accompaniment. Medium Difficult (Gr 3+)
89 measures. Key D – E - F. Meter: 4/4, 3/4, 6/8. Time: 4:00
Cello 1 G#2 – B4 Cello 2 C2 – G#4

THIS IS MY FATHER'S WORLD

#VHP457 2 Violins and Horn in F. 68 measures. (Grade 3-)
Key: D - G. Meter: 4/4 - 3/4. Performance Time 3:00
Violin 1 A3 – B5 Violin 2 A3 – E5
Horn C#4 – E5 (written)

THREE HYMN ARRANGEMENTS FOR THE PSALTERY

#PSA552 Psaltery with Piano Accompaniment
552A - HE LEADETH ME. Grade 2. Key; C. Meter: 4/4. Time: 2:50
Psaltery C4 - A5
552B - IT IS WELL WITH MY SOUL. Grade 2+. Key: C. Meter: 4/4 (6/4)
Time approx. 3:05. Psaltery D4 - C6
552C - O COME, O COME, EMMANUEL. Grade 3-. Key: C. Meter: 3/4 - 4/4
Time approx. 3:20. Psaltery G4 - A5

VOCALISE (Sergei Rachmaninoff)

#FST388 Flute Solo with String Quartet. (Gr. 3+) 42 Measures. Time: 5:00
Key: E. Meter: 4/4 – 2/4 Flute Solo E4 – G#6
Violin1 B#3 – G#5 Violin 2 G#3 – E5
Viola D3 – B#4 Cello C#2 – E4

WE'VE A STORY TO TELL

#STR181 String Quartet (unaccompanied) Medium Difficult (Gr 4)
69 measures. Key F-G-A. Meter: 6/8, 4/4. Time: 2:30
Violin 1 D4 - A6 Violin 2 A3 - D6
Viola E3 - E5 Cello E2 - F#4

WHAT CHILD IS THIS (Greensleeves)

#STR332 String Quartet. Medium Difficult (Grade 4) 98 measures
Key: E minor – D minor. Meter: 6/8. Performance Time approx. 3:40
Violin 1 B3 – G6 Violin 2 G3 – A5
Viola D3 – E5 Cello C2 – A4

WHAT WONDROUS LOVE IS THIS

#VAP308 Viola Solo with Piano Accompaniment (Gr. 4) Meter: 4/4 – 3/4.
Key: (Modal) E dorian to B dorian (major equiv: D – A) 110 Measures.
Performance Time approx . 4:30 Viola C#3 – D6

WHEN I SURVEY THE WONDROUS CROSS with ON A HILL FAR AWAY (The Old Rugged Cross)

#STR162 for String Trio with Piano Accompaniment. Grade 3+
62 Measures. Key: E – A. Meter: 4/4 – 3/4. Time: 2:25
Violin G#3 - E6 Viola G#3 - F#5 (or Violin 2) Cello E2 - F#4

WHEN I SURVEY THE WONDROUS CROSS with ON A HILL FAR AWAY

#VSP347 Violin Solo with Piano Accompaniment. (Gr. 3+) 64 Measures. Time: 2:40
Key: D - G. Meter: 4/4 - 3/4. Violin G3 - D6

WHEN I SURVEY THE WONDROUS CROSS with ON A HILL FAR AWAY (The Old Rugged Cross)

#VHP369 2 Violins & Horn (or Viola) with Piano. (Grade 3-).
62 Measures. Key G. Meter: 4/4 – 3/4. Performance Time approx. 2:20
Violin 1 B3 – D6 Violin 2 G3 – E5
Horn G3 – D5 (written) Viola C3 - G4

WHILE SHEPHERDS WATCHED with WHILE BY MY SHEEP

#STR106 String Quartet. Medium in Difficulty (Grade 3) 65 measures
Key: C – D. Meter: 4/4. Performance Time approx. 2:42
Violin 1 C4 - F#6 Violin 2 G#3 - B5
Viola E3 - F#5 (Violin 3 sub. for Viola) Cello C2 - F#4

WHISPERING HOPE with DAY BY DAY

#FVP376 Flute & Violin with Piano accompaniment. (Grade 4-)
115 measures Key: D - E. Meter: 4/4 – 3/4. Perf. Time approx. 3:45
Flute D4 – A6 Violin G3 – E6

WHISPERING HOPE with DAY BY DAY

#VPG460 3 Violins & Guitar with Piano accompaniment.
116 measures Key: D. Meter: 4/4–3/4. Performance Time approx. 4:10
Violin 1 D4 – B5 grade 3+ Violin 2 C#4 – G#5 grade 3
Violin 3 C#4 – E5 grade 2+

ORCHESTRA

AMAZING GRACE

#ORC449 Church Orchestra. Medium Difficult (Grade 4-) 80 Measures
Key: G - D - A. Meter: 3/4 - 4/4 - 12/8. Performance Time approx. 4:00
Instrumentation: Flute; Clarinet 1,2,3; Bass Clarinet; Alto Sax; Horn in F;
Trumpet 1,2; Trombone; Violin 1,2; Piano

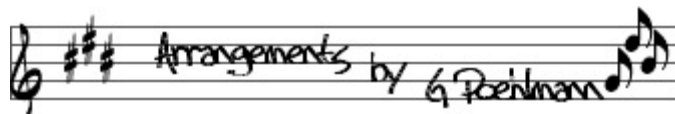
AMERICA, THE BEAUTIFUL

#COS105 Church Orchestra. (Gr. 3) 63 Measures. Key of C/D
Flute, Oboe, Clarinet, Bassoon, Horn in F, Trumpet 1, Trumpet 2, Trombone,
Tuba, Timpani, Bells/Chimes, Percussion 1, Percussion 2, Harp, Organ, Piano,
Violin, Viola, Cello, String Bass.

AND CAN IT BE

#COR448 Church Orchestra. Medium Difficult (Grade 3+) 131 Measures
Key: F - G. Meter: 4/4. Performance Time approx. 5:15
Instrumentation: Flute 1,2; Oboe 1,2; Clarinet 1,2,3; Bass Clarinet; Alto Sax;
Horn in F; Trumpet 1,2; Trombone; Timpani; Violin 1,2; Viola; Cello; Double
Bass; Piano. Bari Sax (D. Bass), Baritone TC (Trombone), Tenor Sax (Trbn).

Note: C4=middle C. Gradings are highly subjective! Grade 1 = Very Easy • Grade 3 = Medium Difficult • Grade 5 = Very Difficult



STRING ARRANGEMENTS

ORCHESTRA

APRIL SHOWERS TO MAY FLOWERS (original composition)

#STO327 Elementary String Orchestra w/Piano. Medium easy (Gr 1 1/2)
Key: D. Meter: 4/4 – 3/4. 84 measures. Performance Time 3:00.
Violin 1, Violin 2, Viola, Violin 3 (Viola T.C.), Cello, String Bass, Piano, optional Percussion.
D major scale in 1st position. Vln 1 (D4-F#5), Vln 2 (G3-E5), Vla (G3-D5), Vlc (C2-D4), Bass (A2-B3).
You get 1 copy of each part with the right to make copies for your organization as needed.

ARCO POLO (original composition)

Grade 2 (Medium Easy)

#STO473 Elementary String Orchestra with optional Piano accompaniment
51 measures. Key: 2 sharps (E dorian). Meter: 4/4 Time: 2:05

THE BIRTHDAY OF A KING

#STO433 String Orchestra with optional Piano. Medium easy (Grade 2)

Key: G Meter: 4/4. 46 measures. Performance Time approx. 2:25
Violin 1, Violin 2, Viola, Violin 3 (Viola T.C.), Cello, String Bass, Basic Piano, Advanced Piano
All parts use "on-tape" fingering except where noted (Violin 1 and Bass).
Vln 1 (A3-E5) – C5 natural, Vln 2 (G3-E5), Vla (G3-C#5), Vlc (D3-D4), Bass (A2-B3) – D#3.

CROWN HIM WITH MANY CROWNS

#ORC447 Church Orchestra. Medium Difficult (Grade 3+) 88 Measures
Key: Eb - F. Meter: 4/4 - 3/4. Performance Time approx. 3:30
Instrumentation: Flute 1/2; Oboe; Clarinet 1,2,3; Bass Clarinet; Alto Sax;
Horn in F; Trumpet 1,2; Trombone; Violin 1,2; Viola; Cello; Double Bass;
Bassoon (Bass Clarinet); Tenor Sax (Trombone); Glockenspiel, Percussion
(Timpani & Suspended Cymbal - 1 or 2 players); Piano

DANCE OF THE EVERGREENS (original composition)

#SOP325 Elementary String Orchestra w/opt Piano, Triangle & Bass Drum
Medium easy (Gr 1 1/2) Key: B minor Meter: 3/4 Time: 2:10 67 measures
Violin 1, Violin 2, Viola, Violin 3 (Viola T.C.), Cello, String Bass, Piano, Triangle, Bass Drum
D major scale in 1st position. Vln 1 (D-F#), Vln 2 (D-E), Vla (D-B), Vlc (D-C#), Bass (A-B).
You get 1 copy of each part with the right to make copies for your organization as needed.

DECEMBER WINDS (original composition)

#STO272 Elementary String Orchestra w/Opt. Piano Medium easy (Gr 2-)
51 measures. Key: D (C with accidentals). Meter: 5/4- 4/4. Time: 2:39
Violin 1, Violin 2, Viola, Violin 3 (Viola T.C.), Cello, Double Bass, Piano (opt)
You get 1 copy of each part with the right to make copies for your organization as needed.

EXCELLORATE (original composition)

Grade 2 orchestra parts

#STO461 Elementary String/Symphonic Orchestra with Soloists & Piano
5 solo parts: Violin, Viola, 'Cello 1, 'Cello 2, 'Cello 3 (grade 3- solo parts)
74 measures. Key: G. Meter: 4/4 Time: 3:20

IT IS WELL WITH MY SOUL

#ENS445 Church Orchestra. Medium Difficult (Grade 3+). 88 Measures
Key: Eb - A - Bb. Meter: 4/4- 3/4 (2/4). Performance Time approx. 3:35
Instrumentation: Flute; Clarinet 1,2,3; Bass Clarinet; Alto Sax; Horn in F;
Trumpet 1,2; Trombone; Violin 1,2; Piano

JINGLE BELLS

#STE425 String Ensemble with Piano (mixed instruments and abilities)
44 measures. Key: D. Meter: 4/4 Time: 1:35 (no repeat) or 3:10 (w/repeat)
Violin 1, Viola 1, Cello 1, Bass 1 (grade 2+)
Violin 2, Viola 2, Cello 2, (grade 2)
Violin 3, Viola 3, Cello 3 (grade 1 – open strings & first finger E & B only)
Bass 2 (grade 1 – open strings only)

MASTERS IN THIS HALL

#COR209 for Small Orchestra. 77 Measures (Grade 2+)

Key: Cm - Dm. Meter: 6/8. Time approx. 2:02

2 Flutes, Alto Sax, Horn, 3 Trumpets, Timp, Perc., Violin, Viola & Cello

NO ONE TO LOVE (arrangement based on song published in 1862)

#ORC375 Full Orchestra Medium Difficult (Grade 4-)

Key: G - A. Meter: 3/4. 191 measures. Time: approx 6:15

You get 1 copy of each part with the right to make copies for your organization as needed.

Note: C4=middle C. Gradings are highly subjective! Grade 1 = Very Easy • Grade 3 = Medium Difficult • Grade 5 = Very Difficult

ORCHESTRA

PRELUDE AND FUGUE (based on J.S. Bach's Prelude & Fugue in G Minor)

#STO321 Elementary/Intermediate String Orchestra with Piano .
Med easy (Gr. 2+) Key: B minor. Meter: 3/4-4/4. Time: 3:30. 75 measures.
Violin 1, Violin 2, Viola, Violin 3 (Viola T.C.), Cello, String Bass, Piano
D major scale in 1st position. Vla (D-D), Vlc (D-D) & Bass (A-A) are 1 octave. Vln 1 (D-A) Vln 2 (D-E)
You get 1 copy of each part with the right to make copies for your organization as needed.

THE SLEIGH-BELL WALTZ (based on a piano solo from 1846)

#STR381 String Orchestra with optional Percussion. Medium (Grade 3+)
Arrangement can be played by Strings alone OR any/all of the Percussion parts
may be added as desired. Key: A - D. Meter: 3/8. 108 measures. Time: 2:22.

Instrument Ranges:

Violin 1 G#3 – E6. Violin 2 A3 – B5 Viola E3 – E5
Cello G2 – A4 Bass E2 – C4 (written)

Percussion parts provided: Glockenspiel, Timpani, Triangle, Sleigh Bells,
Snare Drum, Bass Drum.

You get 1 copy of each part with the right to make copies for your organization as needed.

JAZZ BAND

THE OLD RUGGED CROSS

#JZE429 Jazz Ensemble (3 Alto Saxes, Trumpet & Rhythm). (Grade 3)

85 Measures. Time: 3:50. Key Bb - Ab. Meter: 4/4 – 3/4

Alto 1 F4 – D6 (written) Alto 2 F4 – D6 (written)

Alto 3 C4 – C#6 (written) Trumpet C4 – G5 (written)

Rhythm Parts provided: Guitar, Bass, Piano, Drum Set

THE OLD RUGGED CROSS

#JZE431 Jazz Ensemble (Alto1, Alto 2, Tenor, Trumpet, Trombone & Rhythm)

(Grade 3+) 85 Measures. Time: 3:50. Key Bb - Ab. Meter: 4/4 – 3/4

Alto 1 F4 – D6 (written) Alto 2 F4 – D6 (written)

Tenor 3 F4 – D6 (written) Trumpet C4 – G5 (written)

Trombone Ab2 – G4 Rhythm Parts provided: Guitar, Bass, Piano, Drum Set

ONWARD, CHRISTIAN SOLDIERS

#JZE177 Jazz Ensemble (Grade 3+) 61 Measures. Meter: 3/4 Key: F

Alto, Tenor & Baritone Sax. Trumpet, Trombone & Rhythm.

Alto Sax A4 – E6 Tenor Sax D4 – E6

Bari Sax A3 – D6 Trumpet D4 – D6

Trombone C3 – A4

ONWARD, CHRISTIAN SOLDIERS

#JZE183 Jazz Ensemble (Grade 3+) 61 Measures. Meter: 3/4 Key: Eb

Flute, Alto Sax 1/2, Trumpet, Horn 1/2, Trombone 1/2, Bass, Drum Set

Flute Bb4 - F6 Alto Sax 1 G4 - D6 (written)

Alto Sax 2 E4 - C6 (written) Trumpet C4 - D5 (written)

Horn 1 G3 - Eb5 (written) Horn 2 G3 - C5 (written)

Trombone 1 Bb2 - Eb4 Trombone 2 Ab2 - Bb3

WHAT A FRIEND WE HAVE IN JESUS

#HSR237 Alto Sax, Trumpet & Trombone w/Rhythm (Grade 3)

Meter: 4/4 - 3/4. 88 Measures. Key: Eb - F. Time 2:47

Alto Sax F4 - D6 (written) Trumpet C4 - A5 (written)

Trombone Bb2 - F4

CHORAL MUSIC SPECIAL You buy 1 copy of the music and have permission
to make as many copies as you need for your group!

CHORAL MUSIC

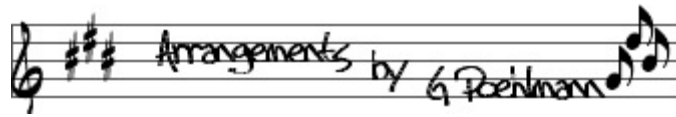
WHEN PEACE, LIKE A RIVER GLORIOUS

#CHO155 SATB with Piano. Soprano & Tenor Solos

141 measures. Key: F – G – D. Meter: 3/4 – 4/4

Combines *It Is Well With My Soul* (new tune and traditional tune) with *Like a
River Glorious* (traditional tune in 3/4 meter)

#ORC155 Orchestration



STRING ARRANGEMENTS

VOCAL MUSIC

GESU BAMBINO

#SST520 Vocal Solo with String Quartet.

51 measures (Grade 3+) Key: E - G. Meter: 12/8 Time approx. 4:00

Soprano Vocal B3– G5

Violin 1 D4 - E6

Violin 2 G#3 - B5

Viola E3 - E5

Cello D2 - E4

You will get 4 different keys! C & D for lower voices. E & G for higher voices.

O HOLY NIGHT

#VSS340 Vocal Solo with String Quartet. (Grade 4)

72 Measures. Time: 4:50. Key of A-C. Meter: 12/8. For Soprano/Tenor

Vocal Range: Male A3 – G5 -or- Female A3 – G5

Violin1 G3 - A6

Violin 2 G3 – B5

Viola C#3 – A4

Cello C2 - A4

Additional version included for Lower Voices (Alto/Baritone/Bass) Key: A - G

ORDERING INFORMATION

*Be sure to list all arrangements by name & number. Alternate transpositions available free of charge when requested at time of payment.
Custom arrangements available.*

There are several convenient ways to order:

1) Send a check/money order to
Glen Poehlmann
18 Sandpiper Drive
Bechtelsville, PA 19505

2) Paypal to: GPoehlmann@gmail.com

3) Venmo to: @Glen-Poehlmann

4) **GPoehlmann.com**

5) SheetMusicPlus.com
(selected arrangements/compositions)

<https://www.sheetmusicplus.com/publishers/arrangements-by-gpoehlmann/17239>

12/29/21

LIKE arrangements by GPoehlmann on FACEBOOK